



Apartment 28 Centurion House

NORTHGATE STREET, CHESTER

LegatOwen
RESIDENTIAL

Apartment 28 Centurion House

NORTHGATE STREET, CHESTER



A spacious one-bedroom apartment set within the exclusive Centurion House development, completed in 2025, inside Chester's Roman Walls, providing secure living at the heart of city's vibrant centre.



FEATURES

- Third floor one bedroom apartment
- Located within the Roman City Walls
- One allocated parking space
- Communal first floor courtyard
- Shops, restaurants, cafes and bars on your doorstep

DESCRIPTION

Part of an exclusive development completed in 2025, this beautifully presented one-bedroom, third floor apartment offers contemporary living in a peaceful setting at the heart of Chester's vibrant city centre.

A generous entrance hall creates an immediate sense of space, housing the intercom for the video entry system serving the apartments. This area also includes a utility store and access to the modern shower room and WC, featuring a spacious walk-in shower with a full-length glass screen and heated towel radiator.

The expansive open-plan kitchen, living and dining area is the standout feature. Finished with oak-effect flooring, the contemporary kitchen includes Silestone quartz worktops and upstands, plus USB charging points. High-quality BOSCH appliances are integrated, including an electric hob, oven, microwave, warming drawer, dishwasher and fridge freezer. Flooded with natural light, this impressive space enjoys far-reaching views over the historic City Walls and towards the rolling landscapes of North Wales — a rare and captivating outlook for city centre living. The generously sized bedroom shares these stunning views and benefits from bespoke fitted wardrobes providing extensive storage.

The apartment includes an allocated parking space within a secure residents' car park, with lift access. The basement offers a communal bike store for added convenience.



Residents of Centurion House further benefit from an exclusive first-floor terrace — a peaceful outdoor retreat to enjoy at any time of day. The apartment also comes with 8 years remaining on the ARK New Build Structural Warranty.

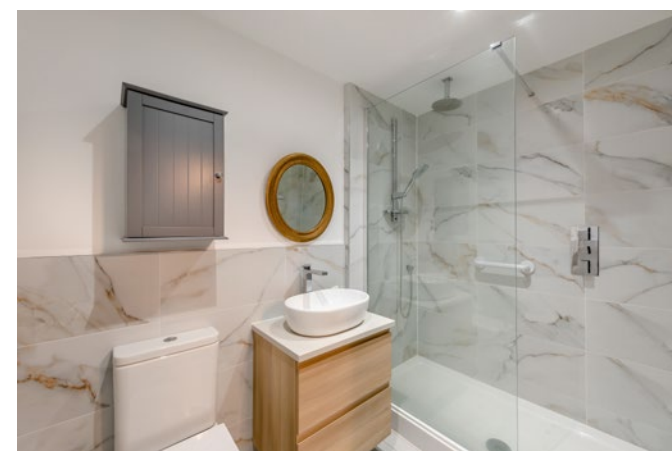
SITUATION

Centurion House is located on Northgate Street, Chester within the Roman City Walls. The prime location offers with a perfect blend of historical charm and modern convenience. There are an array of quaint cafes, restaurants and wine bars on your doorstep, all set against the backdrop of Chester's charming and iconic black and white architecture. The New Chester Market, Storyhouse theatre and cultural centre and Picturehouse Cinema are all within short strolling distance

The renowned Eastgate Clock, the remarkable Chester Cathedral, the picturesque Grosvenor Park and the famous Rows with their distinctive two-tiered medieval galleries are all within close walking distance.

Commuting is available via the A55 towards the M53 and M56 motorway network providing easy access to Manchester, Liverpool, and North Wales. Chester Railway Station has regular intercity direct services to London Euston – 2 hours. Both Manchester and Liverpool airports are within easy travelling distance, being less than 45 minute drive.

Chester Train Station – 1.1 miles
Chester Bus Station – 0.8 miles
Countess of Chester Hospital – 1.9 miles
Liverpool - 23 miles
Manchester - 40 miles







TENURE

Leasehold

COUNCIL TAX

Band C

METHOD OF SALE

Private treaty

SERVICES

Mains electric heating, water and sewerage.

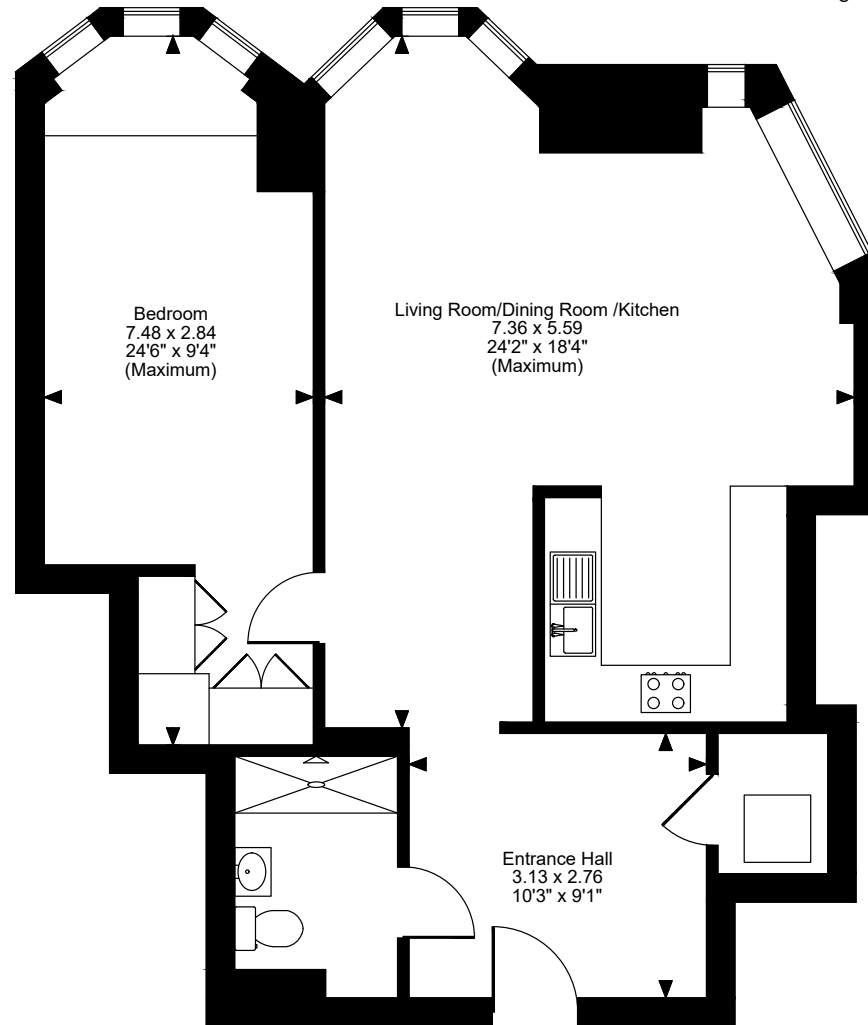
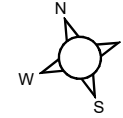
VIEWINGS

We ask that all viewings of the property are made via private appointment with Legat Owen by calling the office on 01244 408288 or emailing residential@legatowen.co.uk

Score	Energy rating	Current	Potential
92+	A		
81-91	B		
69-80	C		
55-68	D	55 D	55 D
39-54	E		
21-38	F		
1-20	G		

FLOORPLAN

Centurion House, Firemans Square, Chester
Approximate Gross Internal Area
751 Sq Ft/70 Sq M



Third Floor

FOR ILLUSTRATIVE PURPOSES ONLY - NOT TO SCALE

The position & size of doors, windows, appliances and other features are approximate only.

© ehouse. Unauthorised reproduction prohibited. Drawing ref. dig/8688575/SHU

LegatOwen
RESIDENTIAL
01244 408288
legatowen.co.uk