

**Netherwood House, Whitchurch Road, Rowton**

**Approximate Gross Internal Area**

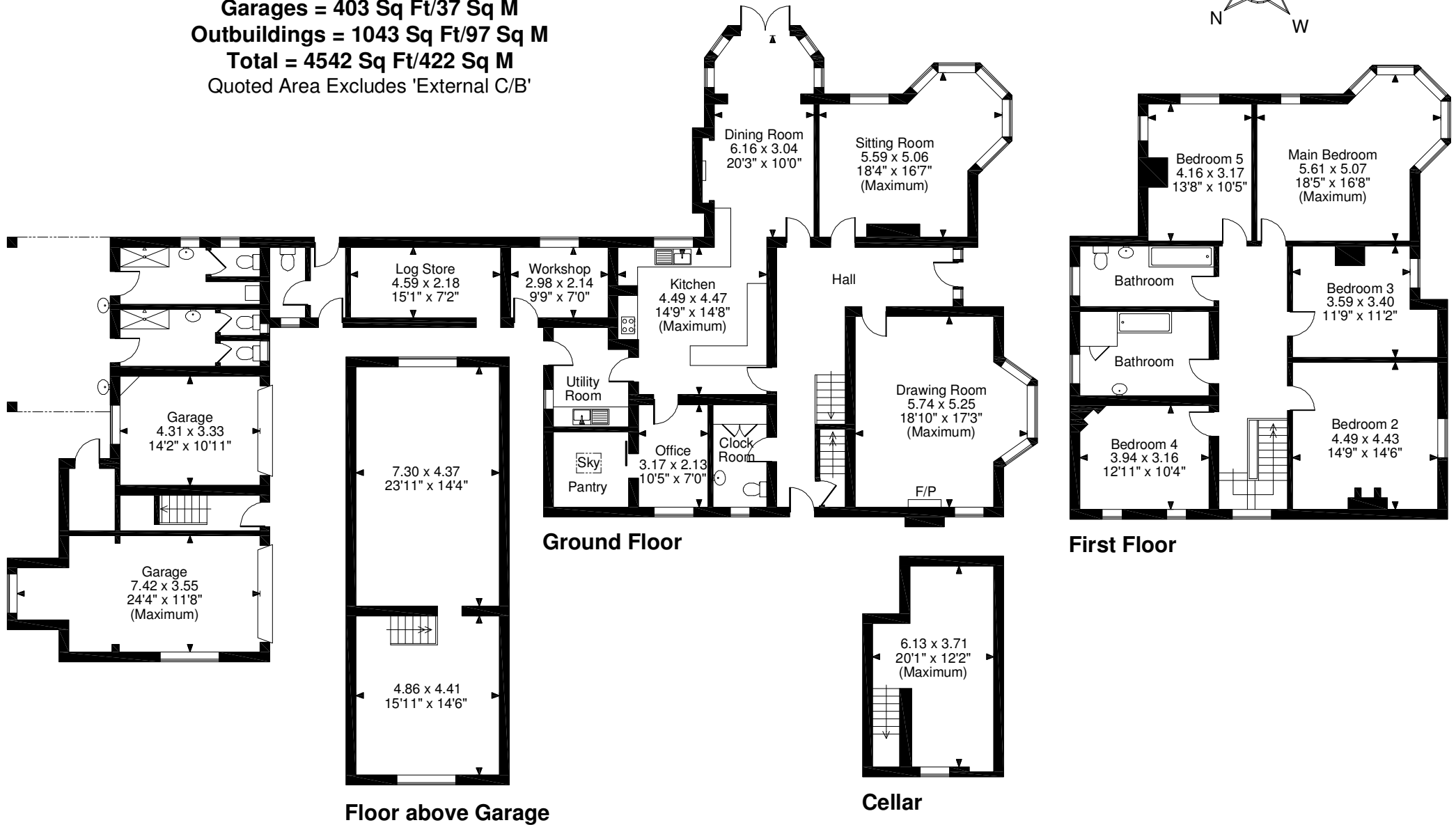
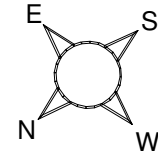
**Main House = 3096 Sq Ft/288 Sq M**

**Garages = 403 Sq Ft/37 Sq M**

**Outbuildings = 1043 Sq Ft/97 Sq M**

**Total = 4542 Sq Ft/422 Sq M**

Quoted Area Excludes 'External C/B'



**FOR ILLUSTRATIVE PURPOSES ONLY - NOT TO SCALE**

The position & size of doors, windows, appliances and other features are approximate only.

© ehouse. Unauthorised reproduction prohibited. Drawing ref. dig/8517650/GSM